



 ada.ac.uk

Ada, the National College for Digital Skills
Manchester

WHERE TECH CAREERS BEGIN.



WELCOME

"Welcome to Ada, the National College for Digital Skills, where your tech career begins. With over 100,000 unfilled tech jobs in the UK and the rapid rise of AI, the demand for skilled professionals is soaring as technology transforms roles across all industries. At Ada, we see the immense opportunities for young people to build successful careers in fields like software development, cybersecurity, games design, and data analysis.

We are excited to announce the launch of our new sixth form provision in Manchester in September 2026 based in our new state-of-the-art campus in Ancoats! Ada's mission is to make the tech sector more representative and address the growing need for skilled digital professionals in Greater Manchester. We are looking for young people from across the region who want to embark on a pathway into a successful career creating the technology of the future.

Manchester Sixth Form Admissions
MCRsixthformadmissions@ada.ac.uk



CURRICULUM OFFER

T-LEVELS

T Level in Digital Software Development

Our new Digital T Level is the academic equivalent of three A Levels and as such attracts UCAS points. It has been developed by the DfE in partnership with top employers including ARM, BBC, Cisco and CompTIA. This is an industry aligned, rigorous qualification that is studied over two years and provides students with all the industry-specific knowledge and skills required to create interactive digital products.

The T Level curriculum

This Level 3 Programme comprises of a Core Component, an Occupational Specialist Component and an Industry Placement. Students develop both in-depth knowledge and practical skills in:

- Problem solving
- Programming (full-stack development)
- Legislation and regulatory requirements
- Business context (including UX/UI)
- Data (including Database Development)
- Digital environments (including Networking)
- Cyber security

45 day employer placement

The Industry placement lasts for a minimum of 315 hours (45 days) and this can include taster days. The placement can be taken either in multi-week blocks, 2 days per week or a combination of these between summer of your first year and the end of your second year.

Entry Requirements

Grade 7 or above in Maths
Grade 6 or above in Computing
Grade 5 or above in English Language

Course Specifics

Pearson T Level Technical Qualification in Digital Software Development
1200 GLH) 603/5832/4



ADMISSIONS

STEP 1

Apply by scanning the QR code and completing the short online application form.

STEP 2

Attend a Lift-off Day, where you will have a short interview, then complete a problem-solving task.

STEP 3

If you become an Ada offer-holder, you will be invited to fun events and taster days where you will be able to meet your future Ada classmates and learn about life at Ada.

STEP 4

On GCSE results day, come to Ada and enrol to start your exciting journey into tech with us!



**SCAN TO
APPLY NOW!**

LIFE AT ADA

Ada's Student Voice

Shape the college experience



Campus in the heart of Manchester

Modern facilities and easy access by public transport

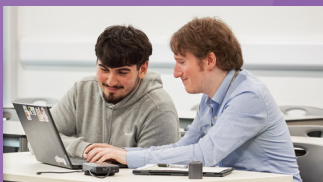
Get Mentored by Tech Industry Pros

One-to-one coaching



Exceptional pastoral support

from our student services team



Free Laptop

and financial support available

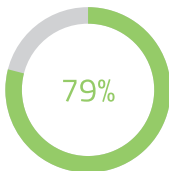


Scan to experience
student life
at Ada London!

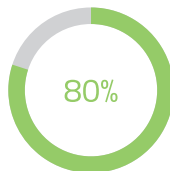
RESULTS



of our students
passed their
two year
course



of our students
achieved at least
one Distinction
in Computer Science



of our students
have secured their
first University
choice

Destinations

Our students secure
University placements
at top institutions such as



CITY UNIVERSITY
LONDON



Queen Mary
University of London



The University of
Nottingham



ual:

Our students secure
Degree Apprenticeships
with employers such as

Deloitte.



pwc



LLOYDS
BANKING GROUP



BANK OF AMERICA



JUST EAT



AutoTrader

Booking.com CAZOO

APPLY NOW

We're excited to welcome you to
Ada Manchester,
where your tech career begins.



www.ada.ac.uk



mcrsixthformadmissions@ada.ac.uk



[@ada_college](https://www.instagram.com/ada_college)

Our Manchester campus is conveniently located and is easily
accessible by public transport.

Nearest Stations:

Manchester Victoria Train station - 10 mins
Manchester Piccadilly Train Station - 15 mins

Piccadilly Gardens - 10 mins
Shudehill - 10 mins
St Peter's Gardens - 10 mins

